



## Chez Bricktop

### Technische fiche May 2024

#### Contact info:

Anne van Es	Technical manager	0032 470 95 14 36	<a href="mailto:anne@transparant.be">anne@transparant.be</a>
Eglantine Möller	Production manager	0032 496 256 672	<a href="mailto:eglantine@transparant.be">eglantine@transparant.be</a>
Soeteken Rosseau	Communication	0032 470 30 03 49	<a href="mailto:soeteken@transparant.be">soeteken@transparant.be</a>
Jan Dewispelaere	Business manager	0032 3 225 1702	<a href="mailto:jan@transparant.be">jan@transparant.be</a>

#### 1. SET

The set is an oval shaped catwalk of 4m55 width x 5m60 long x 20cm high. A grand piano is placed within this oval. We prefer to use the original Erard piano from Claire Chevallier because of its marvelous sound, looks and size.

Audience is placed around the oval shape or at least at 2 sides (elevated).



equipment	#	provided and paid by
Grand piano 1920 , Erard van Claire Chevallier	1	Organizer
Piano seat Claire Chevallier	1	Organizer
Catwalk	1	Transparant



Audience chairs + tribune		Organizer
Cherry-Picker/Genie/ladders		Organizer

## 2. ELECTRICITY

Clean power circuits for sound and lights, power supply, DMX, dispatching, cables and cable covers need to be foreseen by the location.

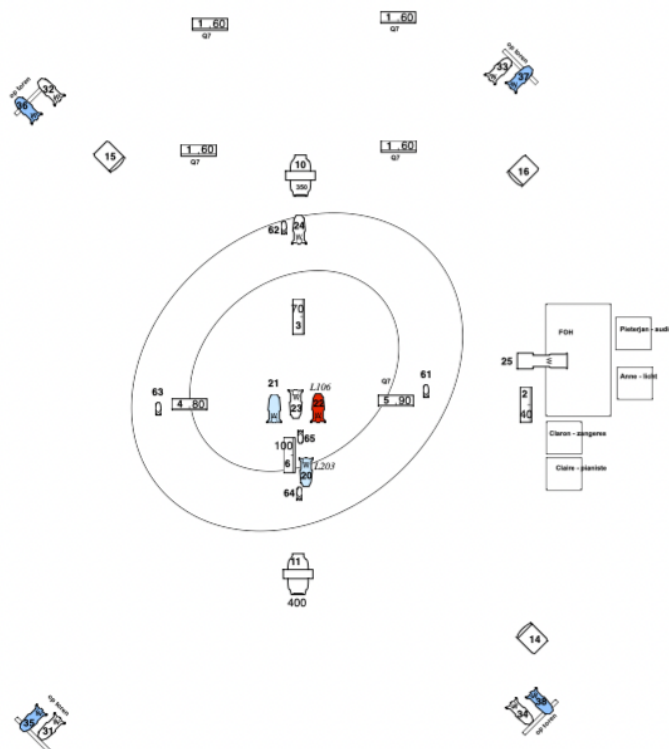
## 3. CONTROL

We bring our own lighting and sound console. **The organizer provides 1 table 2m wide with power supply and 2 little lights and 2 comfortable chairs at the side of the stage area.** We don't use the FOH seating of the venue but need to sit close to the oval set.

## 4. LIGHT

Equipment	#	provided by
Profile 1 Kw 35-50°	14	Organizer
PC 1 KW	4	Organizer
SGM Q7 RGBW	16	Organizer
Pin spots	5	Muziektheater Transparant
Clay Paky Wash 330	2	Muziektheater Transparant
DMX set		Organizer

The Q7's are used as houselights to create a radio-studio vibe. They will be hung above the stage and above the audience area. An adjusted lighting plot will be made per venue.

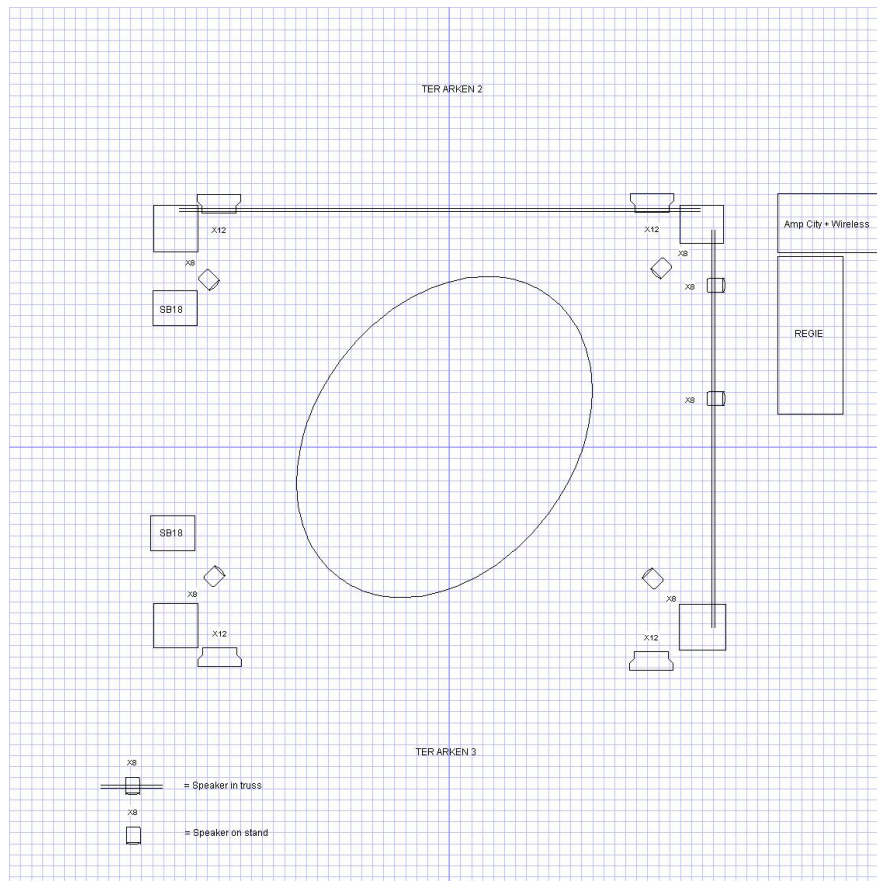




## 5. SOUND

We bring the console SQ5, 2 x ULXD mic systems with DPA 4060 and 2 handheld mics on stands. **We need the venue to foresee 2 in-ear systems.**

The sound setup will be adjusted to the venue and the space where the audience will be. To be discussed with our technical team, hereby an example of the show in BOZAR:



	Patch Chez Bricktop			Luigi	VRT		
	IN	Local	Slink	USB Tie lines	Dante Tie lines		
1	InEar Claron	x					
2	InEar Claire	x					
3	Qlab Music L	x		x	x		
4	Qlab Music R	x		x	x		
5	Piano DPA L		x	x	x	WL	TV29
6	Piano DPA R		x	x	x	WL	TV29
7	Piano Low	x		x	x		
8	Claron DPA		x	x	x	WL	TV29
9	Claron Neumann	x		x	x		
10	Claire DPA		x	x	x	WL	TV29



11	Claron Blue	x		x	x		
	<b>OUT</b>						
1	In EAr Claron		x			WL	TV29
2	In Ear Claire		x			WL	TV29
3	X8 koppel Jardin		x				
4	X8 koppel Jardin		x				
5	X8 koppel Cour		x				
6	X8 koppel Cour		x				
9	Sub L		x				
10	Sub R		x				
11	Top L		x				
12	Top R		x				

## 6. MUSICAL INSTRUMENTS

To be foreseen by the venue:

1 grand piano Erard 1920 van Claire Chevallier. Transport by Pianomobil organized by Eglantine Möller, rental and transport paid by the organizer.

## 7. VIDEO

We use surtitles during the show. Which software and which system we use is to be discussed on forehand and depends on the setup in the venue and the languages that are requested.

## 8. SMOKE/HAZE/PYROTECHNICS

None of these will be used during the performance.

## 9. PLANNING

The planning will be made by Eglantine Möller and will be discussed and sent separately from the rider. We like to have 1 day of setup and focus. A second day will be used for technical corrections, rehearsal, show and strike.

## 10. TECHNICIANS

Provided by the venue are the following experienced technicians:

during	function	#
Setup/strike	light	1
Setup/strike	Set/light	1
Setup/performance/strike	Sound	1